

1991-1992

RIDGID®

**Pin-Up
Calendar**





RIDGID®

Pre-Tested Work Saver® Tools



The RIDGID 1822-I features automatic chucking, quiet induction motor, two-speed transmission and many other features designed for increased productivity, including a maneuverable folding wheel stand.

Product: RIDGID 1822-I Threading Machine

Model: Cynthia Krainer, 1989/90 Miss RIDGID — Photographed at Sorrento Beach, California by Peter Gowland



January 1991

S	M	T	W	T	F	S
		1	2	3	4	5
6	7	8	9	10	11	12
13	14	15	16	17	18	19
20	21	22	23	24	25	26
27	28	29	30	31		

February 1991

S	M	T	W	T	F	S
					1	2
3	4	5	6	7	8	9
10	11	12	13	14	15	16
17	18	19	20	21	22	23
24	25	26	27	28		



Cynthia Krainer, 1989/1990 Miss RIDGID

The Ridge Tool Company
400 Clark Street
Elyria, Ohio 44036-2023 U.S.A.



RIDGID®

Pre-Tested Work Saver® Tools



March 1991

S	M	T	W	T	F	S
					1	2
3	4	5	6	7	8	9
10	11	12	13	14	15	16
17	18	19	20	21	22	23
24/31	25	26	27	28	29	30

April 1991

S	M	T	W	T	F	S
	1	2	3	4	5	6
7	8	9	10	11	12	13
14	15	16	17	18	19	20
21	22	23	24	25	26	27
28	29	30				



RIDGID pipe cutters are tough, built to last and designed to deliver true cuts every time. Manufactured for fast, clean pipe cutting by hand or with power. Once you use them, you will know why their reputation is legendary.

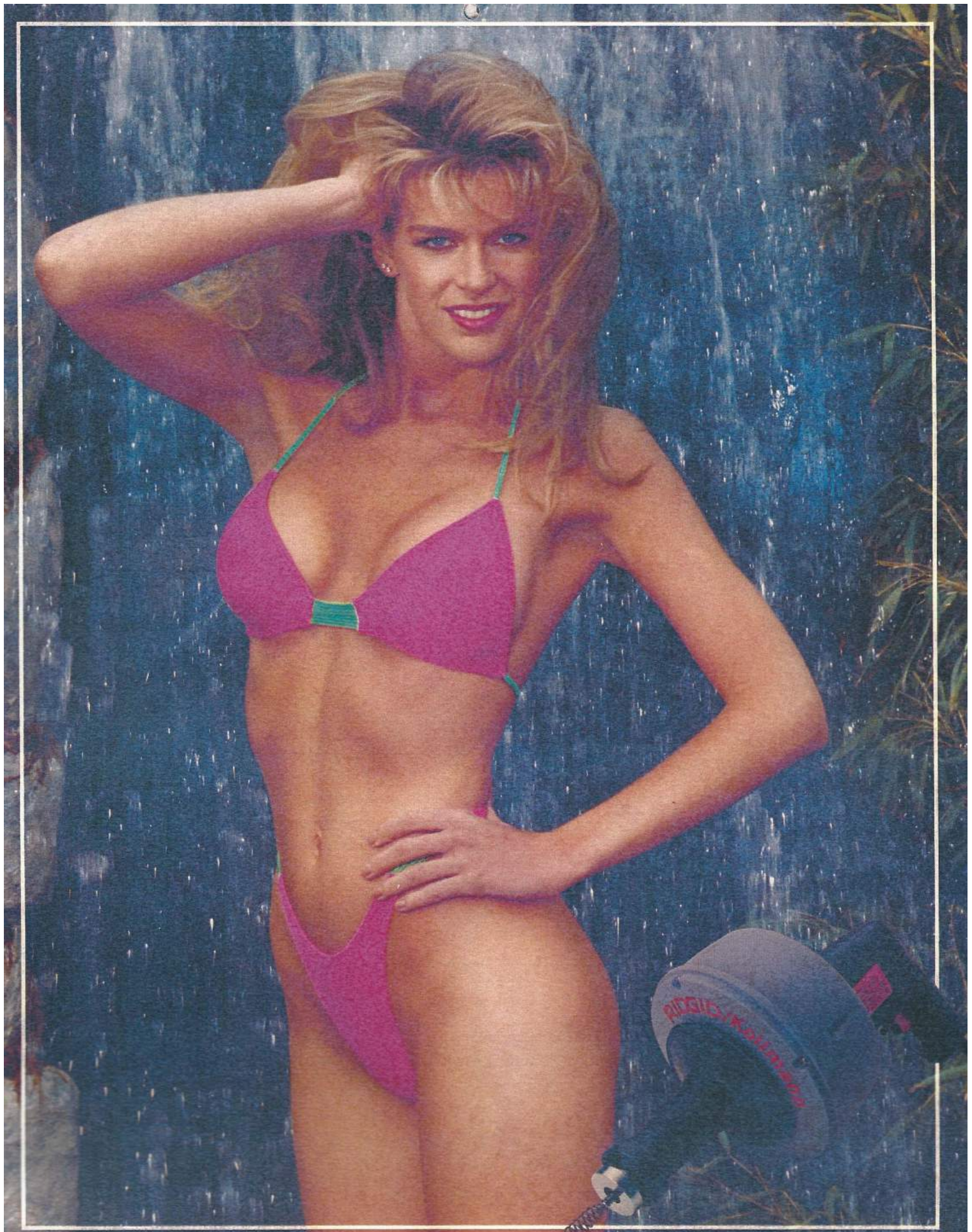
Product: RIDGID 2A Heavy-Duty Pipe Cutter

Model: Jill Terashita — Photographed in Pacific Palisades, California by Peter Gowland



Your RIDGID Distributor warehouses for you; saves you capital, insurance, overhead.

The Ridge Tool Company
400 Clark Street
Elyria, Ohio 44036-2023 U.S.A.



RIDGID®

Kollmann

Pipe and Drain Cleaning Equipment



RIDGID/Kollmann drain guns clear stoppages in small bore pipes and drains. Special features coupled with mains or cordless availability enable blockages to be removed quickly and efficiently.

Product: RIDGID/Kollmann K-38 Drain Gun

Model: Shannon Rae — Photographed at Rustic Falls, California by Peter Gowland



May 1991

S	M	T	W	T	F	S
			1	2	3	4
5	6	7	8	9	10	11
12	13	14	15	16	17	18
19	20	21	22	23	24	25
26	27	28	29	30	31	

June 1991

S	M	T	W	T	F	S
						1
2	3	4	5	6	7	8
9	10	11	12	13	14	15
16	17	18	19	20	21	22
23/30	24	25	26	27	28	29

Your RIDGID Distributor brings technical aid to your staff, to simplify and solve problems.

The Ridge Tool Company
 400 Clark Street
 Elyria, Ohio 44036-2023 U.S.A.



RIDGID®

Pre-Tested Work Saver® Tools



July 1991

S	M	T	W	T	F	S
	1	2	3	4	5	6
7	8	9	10	11	12	13
14	15	16	17	18	19	20
21	22	23	24	25	26	27
28	29	30	31			

August 1991

S	M	T	W	T	F	S
				1	2	3
4	5	6	7	8	9	10
11	12	13	14	15	16	17
18	19	20	21	22	23	24
25	26	27	28	29	30	31



RIDGID pipe wrenches are matchless in quality, durability, and are the overwhelming choice of professionals the world over. RIDGID pipe wrenches are backed by a lifetime warranty against defects in material and workmanship.

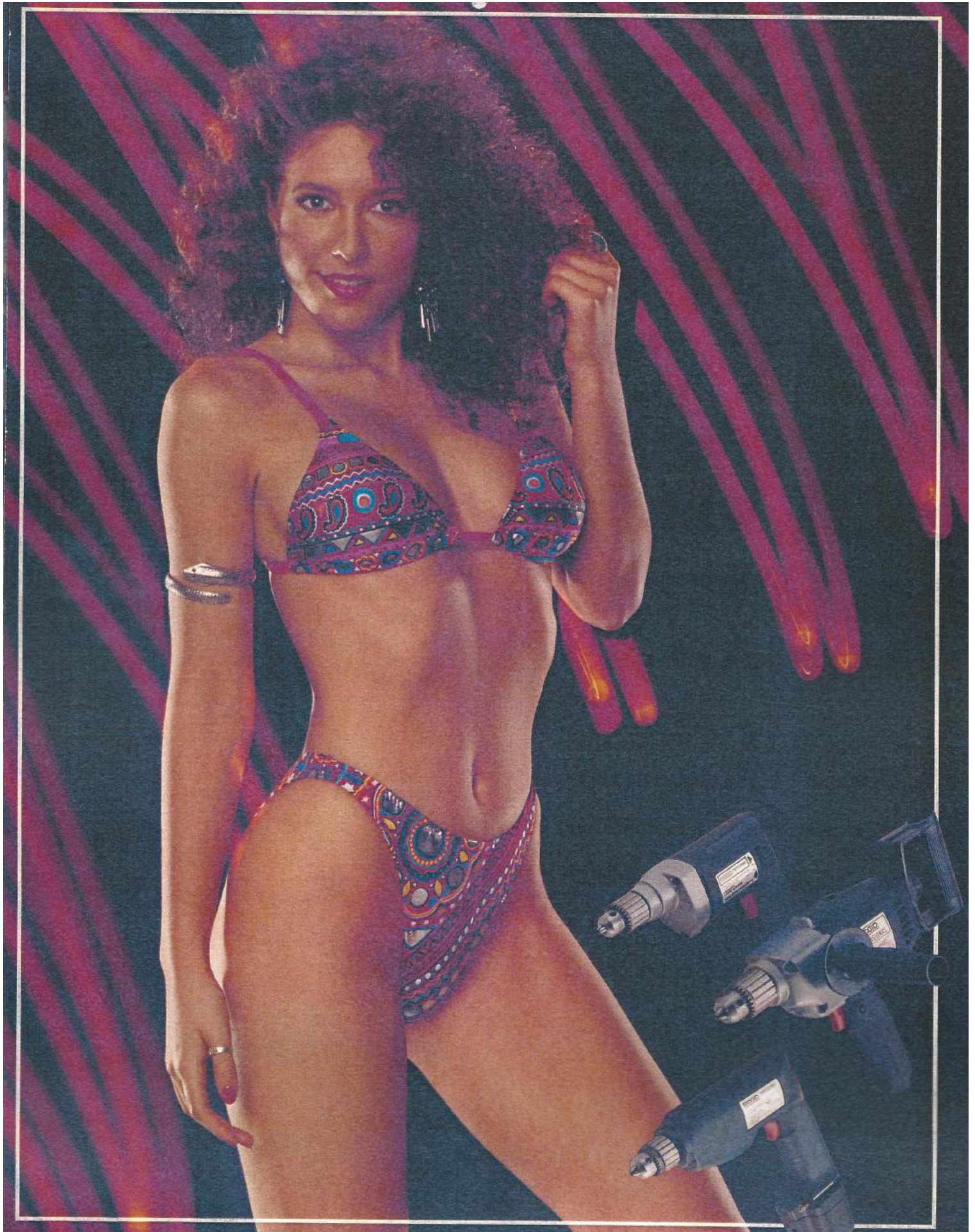
Product: RIDGID Heavy-Duty Pipe Wrench

Model: Cyn D Sullivan — Photographed at Temescal Beach, California by Peter Gowland



Your RIDGID Distributor simplifies your record-keeping—one billing for your multitude of needs.

The Ridge Tool Company
400 Clark Street
Elyria, Ohio 44036-2023 U.S.A.



RIDGID®

Pre-Tested Work Saver® Tools



RIDGID hand tools are designed to provide long and dependable service on the job and to meet the high standards required by the professional craftsman.

Product: RIDGID Portable Electric Drills

Model: Tamara Killeen — Photographed in Santa Monica, California by Peter Gowland



September 1991

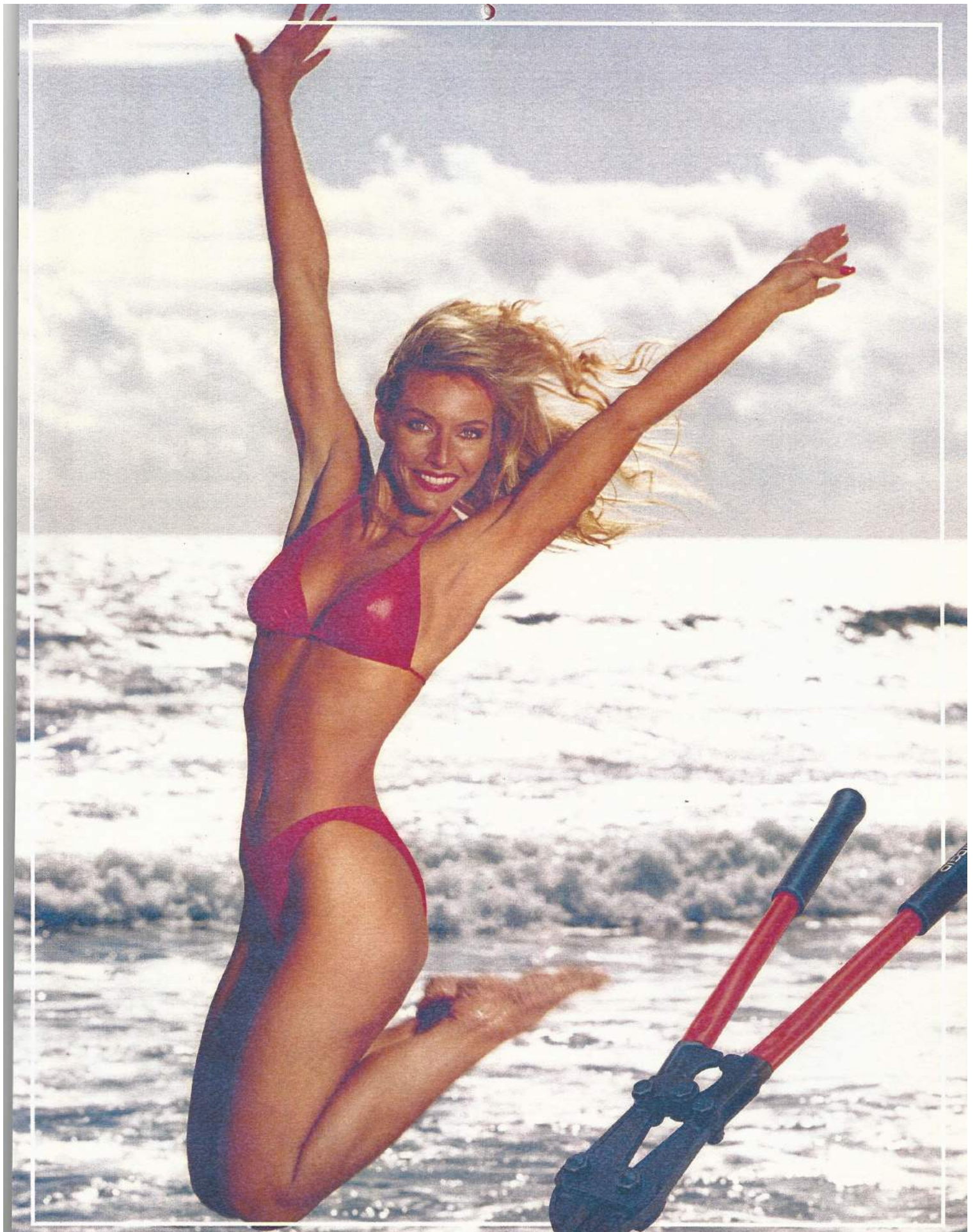
S	M	T	W	T	F	S
1	2	3	4	5	6	7
8	9	10	11	12	13	14
15	16	17	18	19	20	21
22	23	24	25	26	27	28
29	30					

October 1991

S	M	T	W	T	F	S
		1	2	3	4	5
6	7	8	9	10	11	12
13	14	15	16	17	18	19
20	21	22	23	24	25	26
27	28	29	30	31		

Your RIDGID Distributor keeps your overhead down because he has what you need, when you need it.

The Ridge Tool Company
400 Clark Street
Elyria, Ohio 44036-2023 U.S.A.



RIDGID®

Pre-Tested Work Saver® Tools



November 1991

S	M	T	W	T	F	S
					1	2
3	4	5	6	7	8	9
10	11	12	13	14	15	16
17	18	19	20	21	22	23
24	25	26	27	28	29	30

December 1991

S	M	T	W	T	F	S
1	2	3	4	5	6	7
8	9	10	11	12	13	14
15	16	17	18	19	20	21
22	23	24	25	26	27	28
29	30	31				



A true tool for the professional, designed by Ridge Tool in its quality tradition, the RIDGID bolt cutter has a greater mechanical advantage for quick, easy cuts on rod, wire mesh, reinforcing rod, steel strap and bolts.

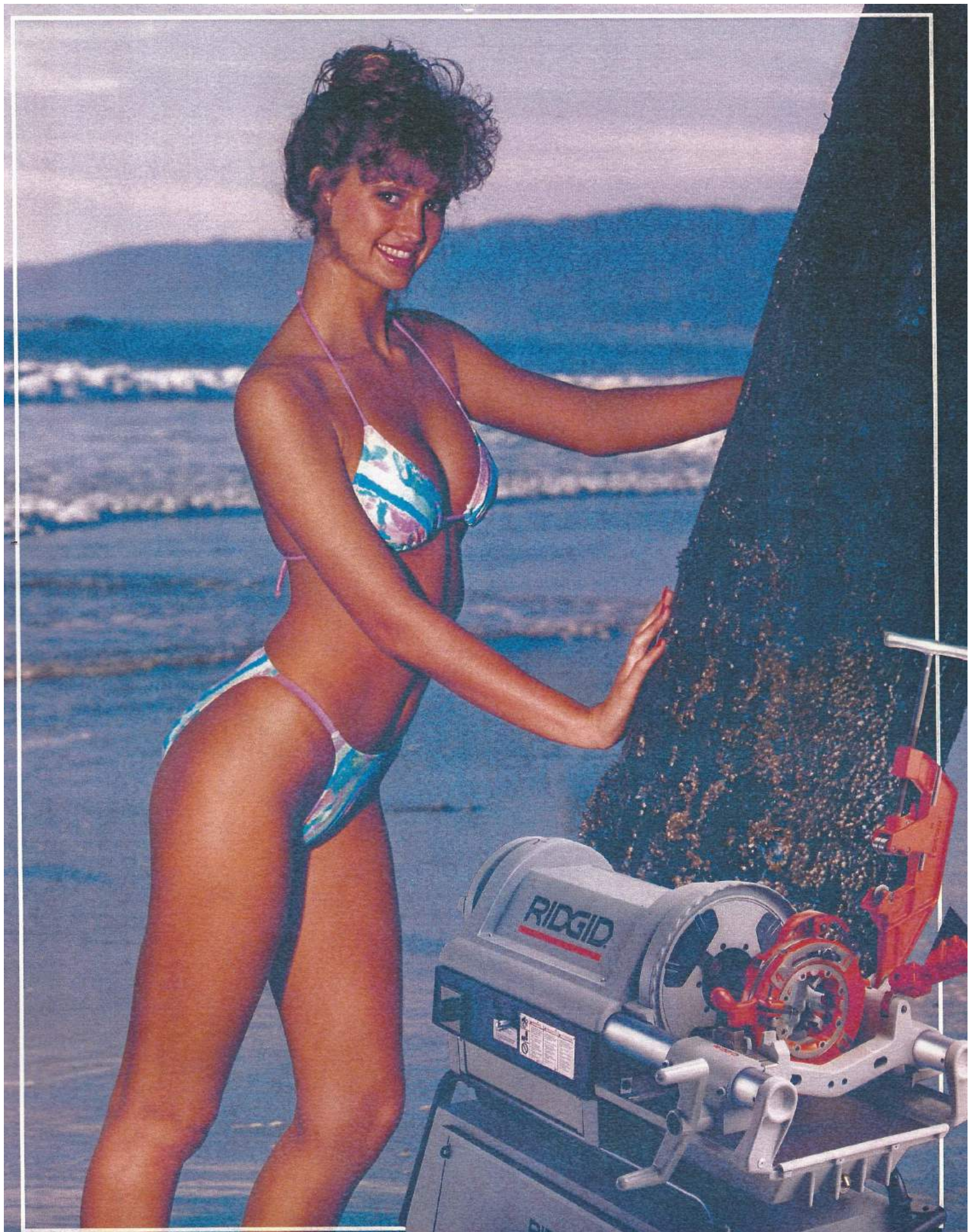
Product: RIDGID Bolt Cutter

Model: Jill Thompson —
Photographed at Santa Monica Beach, California by Peter Gowland



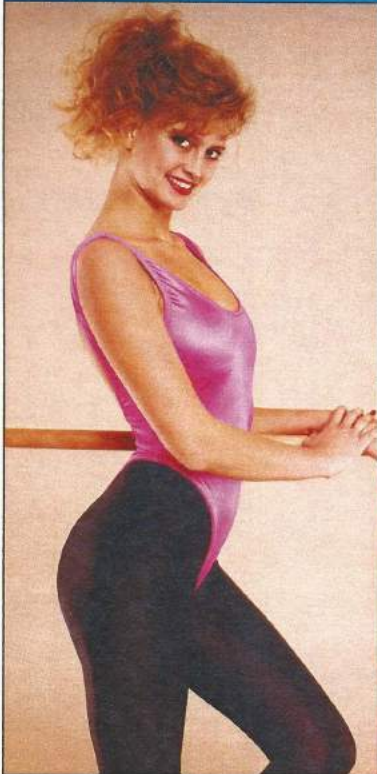
Your RIDGID Distributor buys from hundreds of suppliers, so you can buy from just one.

The Ridge Tool Company
400 Clark Street
Elyria, Ohio 44036-2023 U.S.A.



RIDGID®

Pre-Tested Work Saver® Tools



Now the RIDGID 1224 becomes more versatile than ever! One machine with four capabilities! Thread, cut groove, roll groove and bevel pipe using a machine of proven performance and exceptional features.

Product: RIDGID 1224 Threading Machine

Model: Michelle Thornburg — Photographed at Malibu Pier, California by Peter Gowland



January 1992

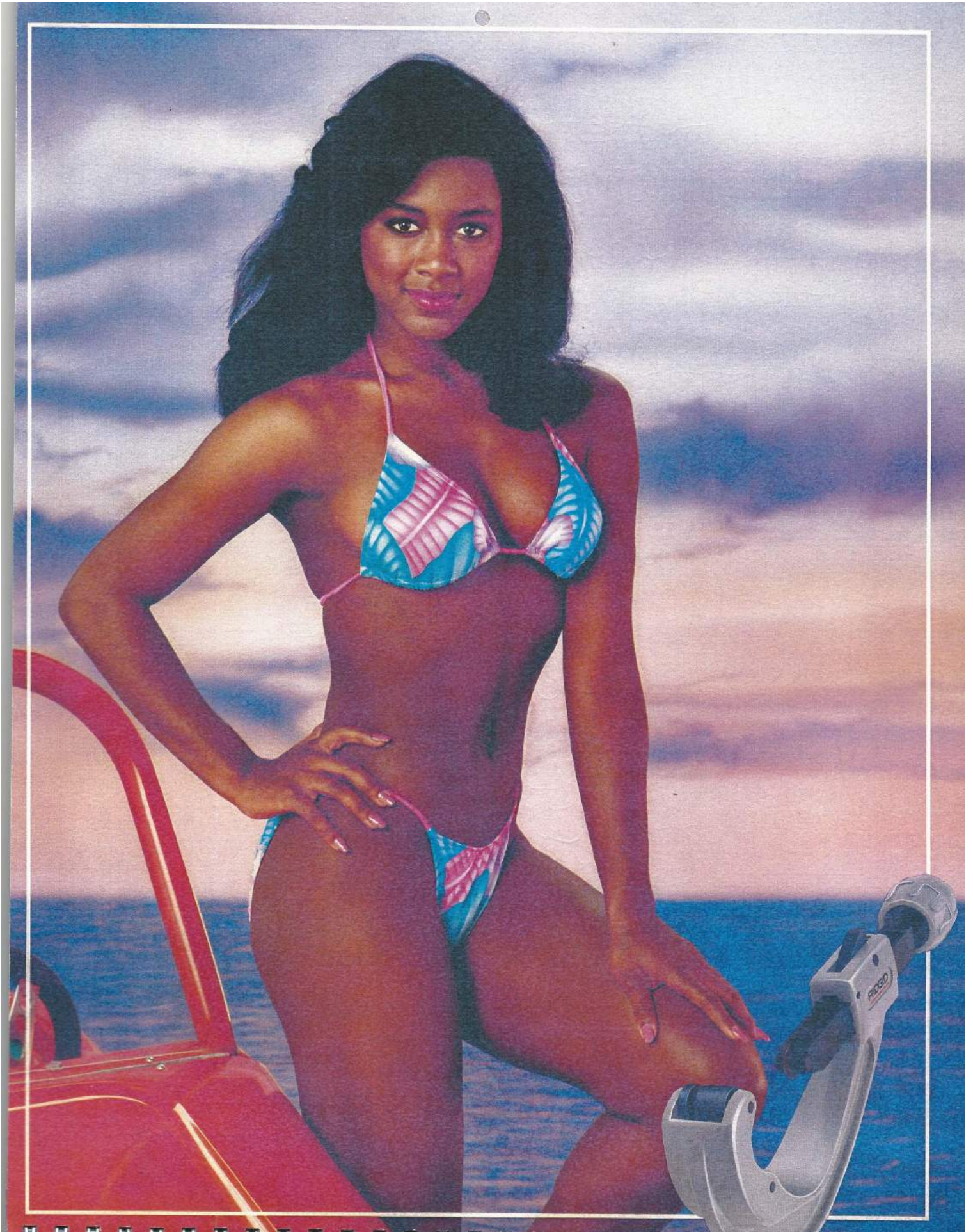
S	M	T	W	T	F	S
			1	2	3	4
5	6	7	8	9	10	11
12	13	14	15	16	17	18
19	20	21	22	23	24	25
26	27	28	29	30	31	

February 1992

S	M	T	W	T	F	S
						1
2	3	4	5	6	7	8
9	10	11	12	13	14	15
16	17	18	19	20	21	22
23	24	25	26	27	28	29

See your RIDGID Distributor for the complete line of RIDGID tools.

The Ridge Tool Company
400 Clark Street
Elyria, Ohio 44036-2023 U.S.A.



RIDGID®

Pre-Tested Work Saver® Tools



When cutting, reaming, flaring, bending, soldering or brazing, RIDGID tubing tools do the job quickly and accurately. The RIDGID line of tubing tools is ideal for projects where accuracy and dependability is a must.

Product: RIDGID 153 Tubing Cutter

Model: Kenya Moore — Photographed in Cleveland, Ohio by Harold Burns



March 1992

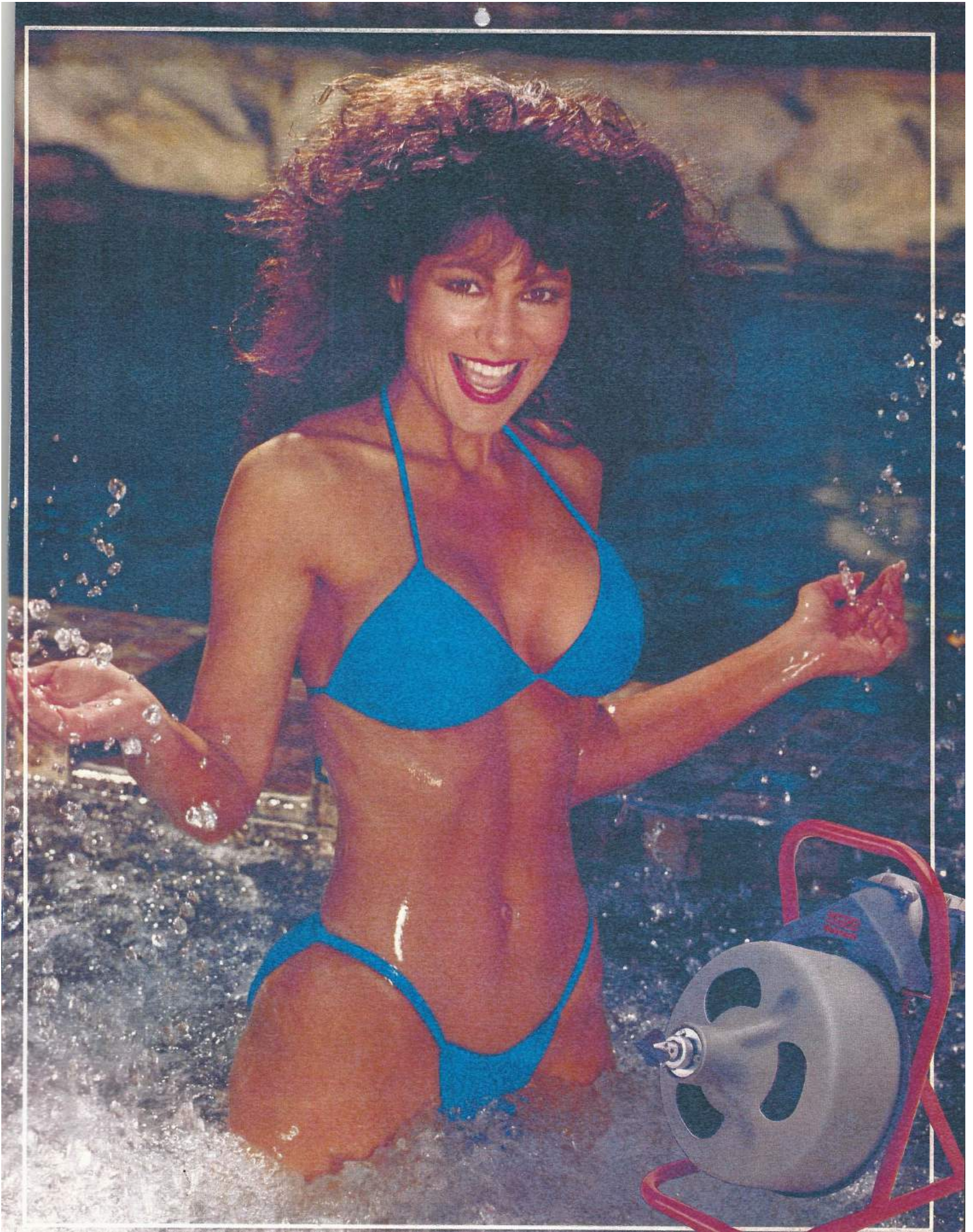
S	M	T	W	T	F	S
1	2	3	4	5	6	7
8	9	10	11	12	13	14
15	16	17	18	19	20	21
22	23	24	25	26	27	28
29	30	31				

April 1992

S	M	T	W	T	F	S
			1	2	3	4
5	6	7	8	9	10	11
12	13	14	15	16	17	18
19	20	21	22	23	24	25
26	27	28	29	30		

Your RIDGID Distributor guarantees your buying power with hundreds of suppliers.

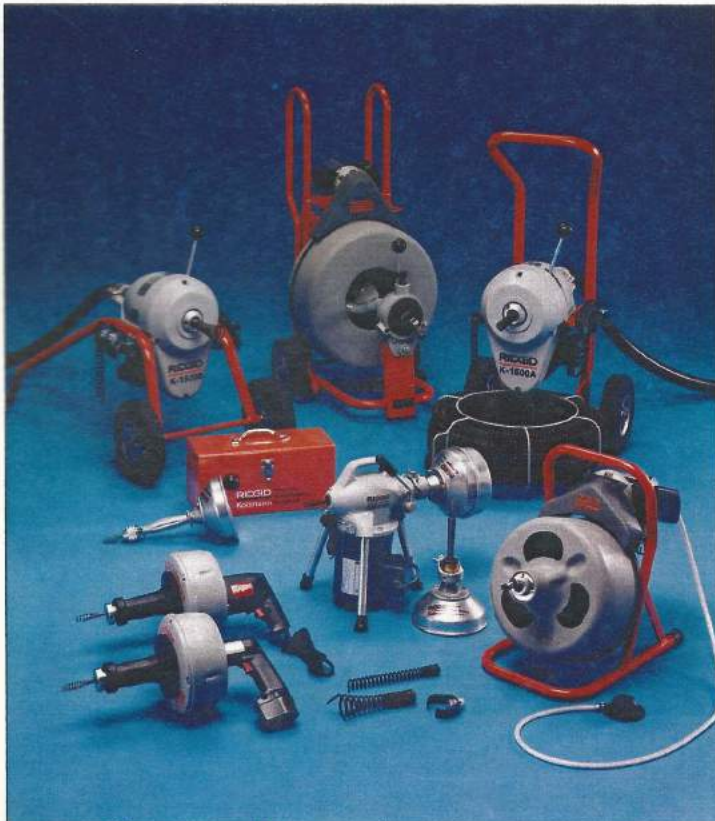
The Ridge Tool Company
400 Clark Street
Elyria, Ohio 44036-2023 U.S.A.



RIDGID®

Kollmann

Pipe and Drain Cleaning Equipment



There is a RIDGID/Kollmann machine for every pipe and drain cleaning need. Whether the requirement is for a hand held tool, a high speed sectional cable machine or a drum type unit, RIDGID/Kollmann is the choice of professionals.

Product: RIDGID/Kollmann K-375 Drain Cleaner

Model: Seelchen Sund — Photographed in Santa Monica, California by Peter Gowland



May 1992

S	M	T	W	T	F	S
					1	2
3	4	5	6	7	8	9
10	11	12	13	14	15	16
17	18	19	20	21	22	23
24/31	25	26	27	28	29	30

June 1992

S	M	T	W	T	F	S
	1	2	3	4	5	6
7	8	9	10	11	12	13
14	15	16	17	18	19	20
21	22	23	24	25	26	27
28	29	30				

Your RIDGID Distributor helps get you back in business fast when you need parts or service.

The Ridge Tool Company
400 Clark Street
Elyria, Ohio 44036-2023 U.S.A.



RIDGID®

Pre-Tested Work Saver® Tools



Nothing reflects professional pipe working skills better than finishing threads. So when your reputation hangs by a thread, protect yourself with the industry's best - RIDGID threaders, dies, reamers and oils.

Product: RIDGID R200 Hand Threader Set

Model: Cindy Margolis — Photographed in Rustic Canyon, California by Peter Gowland



July 1992

S	M	T	W	T	F	S
			1	2	3	4
5	6	7	8	9	10	11
12	13	14	15	16	17	18
19	20	21	22	23	24	25
26	27	28	29	30	31	

August 1992

S	M	T	W	T	F	S
						1
2	3	4	5	6	7	8
9	10	11	12	13	14	15
16	17	18	19	20	21	22
23/30	24/31	25	26	27	28	29

Your RIDGID Distributor is your up-to-date source on the latest technical developments.

The Ridge Tool Company
400 Clark Street
Elyria, Ohio 44036-2023 U.S.A.



RIDGID®

Pre-Tested Work Saver® Tools



Designed as an alternative to hand threading or as a light-weight solution to heavy equipment on the job, a RIDGID portable power drive provides extra muscle where and when you need it. Saving time, money and effort.

Product: RIDGID 600 Power Drive

Model: Julie Kris — Photographed at Marina del Rey, California by Peter Gowland



September 1992

S	M	T	W	T	F	S
		1	2	3	4	5
6	7	8	9	10	11	12
13	14	15	16	17	18	19
20	21	22	23	24	25	26
27	28	29	30			

October 1992

S	M	T	W	T	F	S
				1	2	3
4	5	6	7	8	9	10
11	12	13	14	15	16	17
18	19	20	21	22	23	24
25	26	27	28	29	30	31

Your RIDGID Distributor manages traffic so you get the goods on time, at least cost.

The Ridge Tool Company
400 Clark Street
Elyria, Ohio 44036-2023 U.S.A.



RIDGID®

Pre-Tested Work Saver® Tools



RIDGID products built for over 60 years by professionals have become the standard by which other tools are judged. RIDGID pipe working tools and work holding devices deliver long lasting and quality performance.

Product: RIDGID 40A Tristand Yoke Vise

Model: Colleen O'Brien — Photographed at the Gowland Studios, California by Peter Gowland



November 1992

S	M	T	W	T	F	S
1	2	3	4	5	6	7
8	9	10	11	12	13	14
15	16	17	18	19	20	21
22	23	24	25	26	27	28
29	30					

December 1992

S	M	T	W	T	F	S
		1	2	3	4	5
6	7	8	9	10	11	12
13	14	15	16	17	18	19
20	21	22	23	24	25	26
27	28	29	30	31		

Your RIDGID Distributor keeps you competitive with the latest products for your industry.

The Ridge Tool Company
400 Clark Street
Elyria, Ohio 44036-2023 U.S.A.

RIDGID

Our History

In 1923, in a small building in North Ridgeville, Ohio, Carl Ingwer Sr., William Thewes and Arthur Smith began the manufacture of their new-style RIDGID wrench. Starting out with fewer than 80 employees, they designed and produced a new, heavy-duty pipe wrench that had the quality, strength and endurance demanded by the hand tool market. But even with the men's perseverance, they went through a decade of intense competition in order to carve a place for their wrench in a market then dominated by the Stillson wrench.

Throughout its early years, Ridge Tool produced an ever-increasing range of hand tools for the pipe working industry. Each tool was conceived and produced with the user in mind, resulting in the line of "Pretested Work-Saver Tools."

During the 1940s, Ridge Tool sensed a need for even greater productivity in the area of thread cutting. As a result, the company designed the first power drive for threading pipe in conjunction with hand threaders. Eventually, it developed a complete machine for the preparation and threading of pipe.

Ridge Tool Today

Ridge Tool's world headquarters in Elyria, Ohio accommodates approximately 1,000 employees. It presently covers over 650,000 square feet of working space under one roof, on over 26 acres of land. And, it's still expanding!

On an international level, Ridge Tool now sells its products in 130 different countries. An integral part of Ridge's international marketing policy has been the positioning of its overseas manufacturing divisions, warehousing and representation in strategic areas of the world. Throughout its 67 years in the tool manufacturing business, Ridge Tool and its product lines have grown steadily.

In addition to the main plant in Elyria, Ohio, other Ridge Tool facilities include the Urick Foundry in Erie, Pennsylvania. The RIDGID/Kollmann Division, in Orange, Virginia, produces pipe and drain cleaning equipment. And, Ridge maintains international manufacturing divisions in Cork, Ireland, St. Truiden, Belgium, and Sao Paulo, Brazil, with warehousing facilities throughout the world.

Best - Cost Producer

The goal of Ridge Tool's "Best-Cost Producer" strategy is to meet the challenge of global competition as the quality manufacturer with the lowest relevant costs. This strategy consists of six elements:

- Dedication to quality
- Knowledge of competitors' costs
- Focused manufacturing strategy
- Formalized cost reduction programs
- Effective communications
- Commitment to capital expenditures for productivity



The spacious entrance lobby at Ridge Tool features a visitor reception/meeting area.



Ridge Tool plants in Cork, Ireland and St. Truiden, Belgium are typical of the worldwide investment made by Ridge.



The RIDGID 600 Series Power Drive satisfies the demand for lightweight, portable power tools.



The RIDGID/Kollmann K-375 Drum Machine is a high-quality, lightweight pipe threading machine.



Visitors can see a variety of RIDGID products in our well-lit display area.



Ridge's 1940s manufacturing facility in North Ridgeville, Ohio.

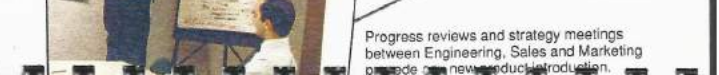
Ridge Tool/Elyria is the foundation on which all other groups within the company are built.



Warehousing facilities and distribution centers are strategically positioned throughout the world to better serve Ridge customers.



Full engineering and research are conducted at Ridge's extensive R & D Center.



Progress reviews and strategy meetings between Engineering, Sales and Marketing provide for new product production.

Best-Cost Producer demands management commitment to build work environments receptive to productivity and change. Effective communications are essential for successful implementation of targets, ideas and ongoing cost reduction programs.

Implementation of this strategy has resulted in a revitalization of Ridge's product engineering, quality and manufacturing functions. In the past five years, Ridge has redesigned its entire line of pipe working tools and equipment, and upgraded manufacturing processes to include state-of-the-art technology. Computer-controlled process equipment is used to produce the highest quality product in the industry.

Product Development

Ridge Tool realized that, in order for the Company to grow and prosper, it would require a broader market base than the heavy-duty pipe wrench could offer. It was, therefore, directed that much of the Company's profits be spent on the purchase of new manufacturing equipment and the development of other hand tools. The investment began to pay off, and in 1943, the Company moved to its present site in Elyria, Ohio.

Today, The Ridge Tool Company is the world's leading manufacturer of pipe working equipment used in a professional capacity. Although most people continue to associate the RIDGID brand name with pipe wrenches, the Company makes over 300 different types of tools in more than 4,000 models and sizes.

From the beginning, product quality has been the reason for the success of RIDGID hand and power tools. With this in mind, the Company has tried to produce in-house as many components of the finished product as possible to assure consistent high quality.

Consistent with its effort to supply the best and broadest selection of tools on the market, the Engineering Department of Ridge Tool has developed a wide range of innovative and unique tools – many times, at the request of customers.

In the mid-1960s, Ridge expanded its product line, to include drain cleaning equipment, through the acquisition of The Kollmann Company. Today, the RIDGID/Kollmann brand of drain cleaning equipment is the most recognized name in the world.

Targeting Our Markets

For many years, The Ridge Tool Company has implemented a marketing strategy which has made it a leading trade magazine advertiser in this era. The Company believes in consistent advertising and aggressive sales support programs to keep its products and the RIDGID name before the buying public. Ridge Tool has also invested heavily in training programs to teach end users throughout the world the proper use of its tools. Such efforts also make it easier for distributors to sell RIDGID products. The current trade show schedule calls for participation in well over 100 shows and exhibits worldwide.

The ongoing computerization, modernization and expansion of facilities, equipment and products point to a healthy and stable economic environment at Ridge. The Company takes pride in its past accomplishments. In the past five years, the percentage of new product sales has increased tenfold. And it looks like it will be increasing even more in the years to come, both at home and abroad.

Advanced techniques and equipment enables Ridge to follow a best-cost producer strategy.



Automated capabilities at the Ridge Urick foundry permit high-volume production of superior-quality castings.

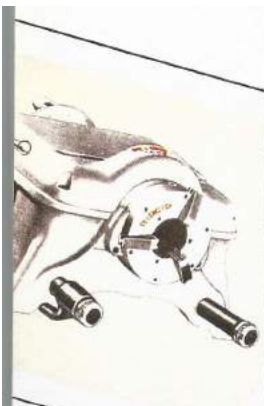
Being a best-cost producer involves highly automated methods to produce high-volume, high-quality castings.



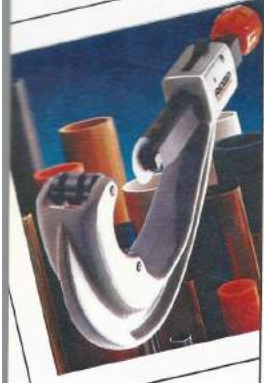
Ridge makes available a wide array of sales literature, from envelope stuffers to full-color posters.

Distributed since 1935, the Ridge Tool calendar has become an institution throughout the world.

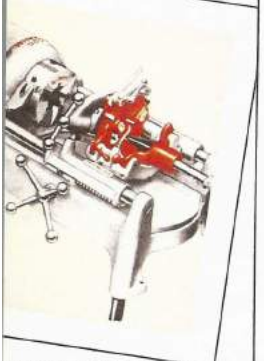
Ridge attends many international trade shows worldwide, including the Cologne Fair (shown).



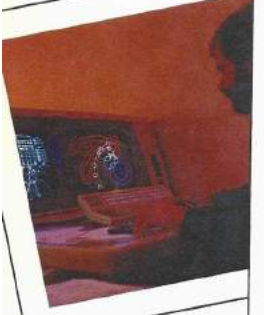
In the late 1940s, Ridge Tool offered an alternative to hand threading by introducing the 400 Power Drive.



The 150 Series tubing cutters are designed for outstanding accuracy and reliability.



Seeing a need for a complete pipe reaming/threading/cutting system, Ridge developed the Model 500 Series Threading Machine.



Ridge's extensive CAD/CAM program and facility gives the company state-of-the-art design capabilities.