

RIDGID[®]

Professional Tools

DRILLING



oil

gas

mining

We
Build
Reputations™

RIDGID®



Your success - is our business

Since 1923, RIDGID® has remained the symbol of certainty to dedicated professionals of the expert trades. We at the Ridge Tool Company take this heritage seriously. This is why every tool that bears the RIDGID® brand is engineered to the same high standards of quality, strength, and endurance as was that first heavy-duty pipe wrench more than 80 years ago.

Ever since the introduction of that revolutionary product, our expectations have been to exceed those of our customers through industry leading products and support that provide:

- **Confidence** that RIDGID® products will consistently perform in the harsh demands of the professional's work site.
- **Efficiency** which results in faster work, more jobs, and improved profits.
- Industry **Innovations** to help our customers create new services and income sources.

The RIDGID® brand is a promise to our customers which we continue to honor every day. When selecting the tools on which to stake your reputation, know that professionals choose the market leader.

The difference is distinct. The difference is RIDGID®.

RIDGE TOOL COMPANY

We Build Reputations

Whether as a one person truck, or a member of a multinational crew, you have put immeasurable time and effort in building a business of which to be proud. Though individual heart is at the core, it is the customer's perception and visible results that enable success. These are what define a reputation.

A positive reputation delivers the calls and the contracts. It is a testament to hard work and business savvy. It builds over time. However, it can break in no time. Call backs and missed deadlines can be critical. This is why RIDGID® promises to deliver:

- Confidence that RIDGID® products will consistently perform in the harsh demands of the professional's work site.
- Efficiency which results in faster work, more jobs and improved profits.
- Industry Innovations to help our customers create new services and income sources.

Maximizing uptime, through both tools and information, is how RIDGID strives to give you a competitive advantage. Whether a seasoned veteran or just starting out, RIDGID tools and services help you build what matters most – your good name.

As a group, we take pride in knowing our individual efforts serve the greater good. From potable water to a reliable infrastructure, it takes all of us working together to keep this world in action. For ourselves, for our businesses, and for the industry...

We Build Reputations

About RIDGID®

RIDGID®, a leading manufacturer of innovative tools and equipment for the professional trades, markets its products in more than 140 countries. The company's broad offering of more than 300 types of tools, including RIDGIDConnect™, an online business tool, serves the rental, plumbing, HVAC/R, utility, industrial, electrical, petroleum, institutional, commercial and hardware markets. RIDGID is part of Emerson Commercial & Residential Solutions, a business of Emerson, which brings technology and engineering together to design and produce some of the highest quality tools and equipment in the world.

From wet/dry vacs to the industry's bestselling pipe diagnostic system, key brands include RIDGID®, KNAACK®, PROTEAM® and WEATHER GUARD®.

About Emerson

Emerson (NYSE: EMR), based in St. Louis, Missouri (USA), is a global leader in bringing technology and engineering together to provide innovative solutions for customers in industrial, commercial, and consumer markets around the world. The company is comprised of five business segments: Process Management, Industrial Automation, Network Power, Climate Technologies, and Commercial & Residential Solutions. Sales in fiscal 2011 were \$24.2 billion. For more information, visit www.Emerson.com.



EMERSON™

Commercial & Residential Solutions

Anatomy of a Legend



RIDGID®
Lifetime Warranty.

HEAVY-DUTY PIPE WRENCHES

4



ALUMINIUM PIPE WRENCHES

6



PIPE VISES

7



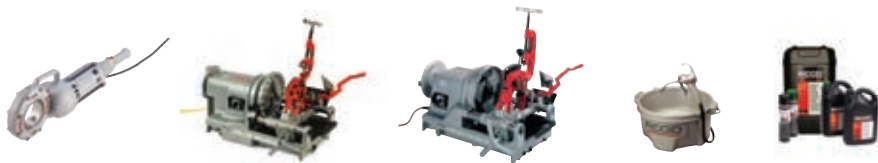
PIPE CUTTERS & HYDRAULIC BENDERS

8



THREADING MACHINES

9



LOCATORS

11



TEST & MEASUREMENT. INSPECTION

13



CLEANING. STORAGE

14



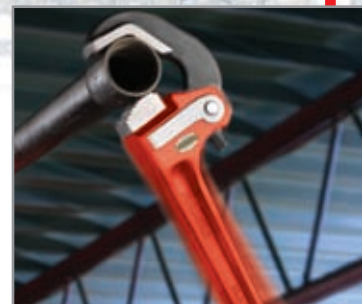
HEAVY-DUTY PIPE WRENCHES



Catalog No.	Model No.	Nom. Size		Pipe Capacity		Weight, kg
		in.	mm	in.	mm	
31000	6	6	150	3/4	27	0,2
31005	8	8	200	1	34	0,3
31010	10	10	250	1 1/2	48	0,8
31015	12	12	300	2	60	1,2
31020	14	14	350	2	60	1,6
31025	18	18	450	2 1/2	76	2,6
31030	24	24	600	3	89	4,4
31035	36	36	900	5	141	8,7
31040	48	48	1200	6	168	15,6
31045	60	60	1500	8	219	23,3

Straight Pipe Wrench

- Sturdy, cast-iron housing and I-beam handle with full floating forged hook jaw, featuring self-cleaning threads with replaceable hook and heel jaws.
- **Heavy-duty pipe wrenches comply with federal specifications GGG-W651E, Type II, Class A.**



Catalog No.	Model No.	Nom. Size		Pipe Capacity		Weight, kg
		in.	mm	in.	mm	
31395	10	10	250	1 1/2	48	0,9

Rapwrench®

- With a deeper and broader hook jaw housing provides a smooth, flat surface that is ideal for occasional use as a hammer.



Catalog No.	Model No.	Nom. Size		Pipe Capacity		Weight, kg
		in.	mm	in.	mm	
10348	10	10	250	1 1/2	48	1,0
10358	14	14	350	2	60	1,6

RapidGrip®

- Quick one-handed operation makes your jobs move faster.
- The spring-loaded jaw design provides rapid ratcheting action.
- Unique combination heel/hook jaw design aggressively bites the work piece and ensures a secure grip.

HEAVY-DUTY PIPE WRENCHES



Chain Tongs

- Designed and sized to provide extra leverage for the toughest jobs.
- All models feature double-end jaw styles which can be reversed, except Model 3215, which is a single-end tong.

Catalog No.	Model No.	Pipe Capacity		Chain Length		Chain Breaking Load*		Weight, kg
		in.	mm	in.	mm	lb.	kg	
92660	3215	4 - 18	114 - 457	74 1/2	1892	56.000	25.401	71
92665	3229	1/4 - 2 1/2	13 - 73	17 1/2	445	13.800	6.260	5
92670	3231	3/4 - 4	26 - 114	22 1/2	572	17.600	7.983	10
92675	3233	1 - 6	33 - 168	32	813	20.100	9.117	13
92680	3235	1 1/2 - 8	48 - 219	40 1/2	1029	22.000	9.979	18
92685	3237	2 - 12	60 - 323	55 1/2	1410	31.000	14.061	30

* All chains are tested to 2/3 of their breaking strength.

Compound Leverage Pipe Wrench

- Unique design multiplies the turning force applied to a pipe.
- Ideal for freeing locked couplings and joints frozen by age or damage.



Catalog No.	Model No.	Nom. Size		Weight, kg
		in.	mm	
31375	S-2	2	60	3,3
31380	S-4A	5	141	15,2
31385	S-6A	6	168	20,6
31390	S-8A	8	219	31,1

Chain Wrenches

- A double jaw gives fast, ratchet-like action in either direction.
- The heavy-duty model has replaceable alloy steel jaws.
- The light-duty model has a one-piece forged alloy steel handle and jaw. Ideal for use in close quarters.



Catalog No.	Model No.	Description	Length mm	Rated Pipe Capacity		Actual O.D. Capacity		Chain Length		Weight, kg
				in.	mm	in.	mm	in.	mm	
31310	C-12	Light-Duty Chain	300	2	60	4	100	15 3/4	390	0,8
31315	C-14	Heavy-Duty Chain	320	2	60	5	125	18 1/2	460	1,2
31320	C-18	Heavy-Duty Chain	435	2 1/2	76	5	125	20 1/4	500	2,7
31325	C-24	Heavy-Duty Chain	580	3	89	5	125	20 1/4	500	3,7
31330	C-35	Heavy-Duty Chain	700	4 1/2	110	7 1/2	185	29	725	7,1

Hex Wrenches

- Hex jaw design gives multi-sided, secure grip on all hex nuts, square nuts, unions and valve packing nuts.
- The extra-wide opening offset model is ideal for securing drain nuts on sinks and tubs.



"I started using Ridgid tools 30 years ago on the oil rigs overseas. I was young but knew quality mattered and Ridgid has it. I started using hand pipe threaders and pipe cutters. Then we moved into the 535 threader, thought I died and gone to heaven! As far as pipe wrenches go, it's a given, you just don't buy anything else, simple..."

Vioen Ernest D
Duncan BC CANADA

ALUMINIUM PIPE WRENCHES

Aluminum Straight Pipe Wrench



- Professional strength in lightweight aluminum.
- Offers the same durability and ease-of-use found in all RIDGID® heavy-duty wrenches.

Catalog No.	Model No.	Nom. Size		Pipe Capacity		Weight, kg
		in.	mm	in.	mm	
31090	810	10	250	1 1/2	48	0,4
47057	812	12	300	2	60	0,7
31095	814	14	350	2	60	1,1
31100	818	18	450	2 1/2	76	1,7
31105	824	24	600	3	89	2,7
31110	836	36	900	5	141	5,0
31115	848	48	1200	6	168	8,4



Aluminum RapidGrip®

- All the great benefits of the heavy-duty RapidGrip® wrench.
- 35% lighter than heavy-duty models.
- Ideal for overhead applications.



Catalog No.	Model No.	Nom. Size		Pipe Capacity		Weight, kg
		in.	mm	in.	mm	
12693	14	14	350	2	50	1,0
12698	18	18	450	3	75	2,2

Aluminum End Pipe Wrench

- Ideal for jobs in close quarters and overhead applications.
- Designed for easy access in close parallel lines.
- 40% lighter than heavy-duty wrenches.



Catalog No.	Model No.	Nom. Size		Pipe Capacity		Weight, kg
		in.	mm	in.	mm	
90107	E-910	10	250	1 1/2	48	0,4
90117	E-914	14	350	2	60	1,1
90122	E-918	18	450	2 1/2	76	1,7
90127	E-924	24	600	3	89	2,7

Aluminum Offset Pipe Wrench

- Features a jaw opening parallel to the handle and a narrower hook jaw head.
- Provides easy entry into tight spots.



Catalog No.	Model No.	Nom. Size		Pipe Capacity		Weight, kg
		in.	mm	in.	mm	
31120	14	14	350	2	60	0,9
31125	18	18	450	2 1/2	76	1,6
31130	24	24	600	3	89	2,7

PIPE VISES

Portable Tristand® Vises

Each TRISTAND® features integral folding legs for easy transport and setup, tool hangers and a base which overhangs the front legs for clear tool swing.

- 425 – Features a “quick grab” handle self-locking latch and carry handle.
- 40-A – Integrates a yoke style vise into the base and a rugged tool tray.
- 460-6 Optimized base layout to maximize working area, convenient lug to clamp the weld ground, rugged leg chain for the tough demands and a durable tool tray.
- 460-12 All the features of the 460-6 but a capacity of 12” and an adjustable rear leg.

Catalog No.	Model No.	Pipe Capacity		Weight, kg
		in.	mm	
40130	40-A	1/8 - 2 1/2	10 - 76	22,0
16703	425	1/8 - 2 1/2	3 - 60	14,5
36273	460-6	1/8 - 6	3 - 150	21,0
36278	460-12	1/8 - 12	3 - 300	32,0



Model 425



Model 40-A



Weld Ground Lug



Model 460-6

Adjustable Rear Leg

Stand Chain Vise

- Handy, portable stand chain vise.
- Sturdy cast-iron frame.
- Equipped with pipe rest, pipe bender and tool tray.
1 1/4” pipe for legs and connecting pipe not furnished.

Catalog No.	Model No.	Pipe Capacity		Weight, kg
		in.	mm	
40165	560	1/8 - 5	10 - 141	11,7



Bench Chain Vises

- Crank handle is anchored to base.
- Rugged cast-iron base has handy pipe rest and bender. Capacities of 1/8” through 8”.
- Two models available for plastic pipe. Toothless jaws are neoprene-coated to prevent scoring of pipe.

Catalog No.	Model No.	Pipe Capacity		Weight, kg
		in.	mm	
40185	BC210	1/8 - 2 1/2	10 - 76	3,5
40195	BC410	1/8 - 4	10 - 114	6,7
40190	BC210P*	1/2 - 2 7/8	15 - 70	3,4
40200	BC410P*	1/2 - 4 1/2	15 - 110	6,6
40205	BC510	1/8 - 5	10 - 141	6,8
40210	BC610	1/4 - 6	14 - 168	11,1
40215	BC810	1/2 - 8	21 - 219	17,3

* For Plastic Pipe and Tube



PIPE CUTTERS HYDRAULIC BENDERS

Heavy-Duty Pipe Cutters

- Fast, clean pipe cutting by hand or power.
- Extra-long shank protects adjustment threads, while an extra-large handle is provided for quick, easy adjustment.
- Can be converted to 3-wheel cutter by replacing rollers with cutter wheel.



The 2A and 4S models can be ordered as a 3-wheel model for use in areas where a complete turn is not possible.

- Second handle on 3-S, 4-S and 6-S models make two-man leverage possible on large pipe sizes.

Catalog No.	Model No.	Std. Wheel	# Wheels	Pipe Capacity Nominal Size		Weight, kg
				in.	mm O.D.	
32810	1-A	33100	1	1/8 - 1 1/4	10 - 43	3,0
32820	2-A	33100	1	1/8 - 2	10 - 60	3,2
32830	3-S	33120	1	1 - 3	34 - 89	6,9
32840	4-S	33120	1	2 - 4	60 - 114	8,2
32850	6-S	33145	1	4 - 6	114 - 168	10,8
32825	2-A	33100	3	1/8 - 2	10 - 60	3,2
32845	4-S	33120	3	2 - 4	60 - 114	8,2



Hinged Pipe Cutters

- Designed for rapid cutting of 2" through 12" steel pipe, heavy-wall steel pipe and cast-iron pipe.
- The 11 models operate with minimal cutter rotation as necessary for tight quarters.
- Second handle included for 466, 472 and 468 makes two-man leverage possible for large pipe sizes.

Catalog No.	Model No.	Std. Wheel	# Wheels	Pipe Capacity Nominal Size		Weight, kg
				in.	mm O.D.	
For Steel Pipe						
73162	424-S	75567	4	2 - 4	60 - 114	6,0
83080	466-S	75562	4	4 - 6	114 - 168	13,0
83145	468-S	75562	4	6 - 8	168 - 219	15,0
83165	472-S	75562	4	8 - 12	219 - 324	19,0
For Heavy Wall Steel Pipe						
83085	466-HWS	75557	4	4 - 6	114 - 168	13,0
83150	468-HWS	75557	4	6 - 8	168 - 219	15,2
83170	472-HWS	75557	4	8 - 12	219 - 324	19,1
For Cast-Iron Pipe						
74227	424-CI	75572	4	2 - 4	60 - 114	6,0
74685	466-CI	33135	4	4 - 6	114 - 168	13,0
74700	468-CI	33135	4	6 - 8	168 - 219	15,2
74710	472-CI	33135	4	8 - 12	219 - 324	19,1



Hydraulic Benders

RIDGID® Hydraulic Benders are versatile and portable benders, ideal for on-site bending as well as machine construction, boiler making and various industrial applications. Available in a manual configuration that is designed for precision cold bending of standard gas pipe and black pipe up to 3".

- Durable piston seals prevent premature leaks and maximize uptime.
- Longer cylinder stroke per pump and optimized hand force minimizes operator fatigue.
- Bending angle indicators reduce starts, stops and pipe removal to take measurements.



Catalog No.	Model No.	Description	Capacity (in)	Weight	
				lb.	kg.
36518	HB382	Tip-up Wing Hydraulic Bender (Manual)	3/8 - 2	181	82
36523	HB383	Tip-up Wing Hydraulic Bender (Manual)	3/4 - 3	401	182

Model 700 Hand-Held Power Drive

Capacity

- Pipe: 1/8"-2" (3 mm-50 mm).
Bolt: 1/4"-1" (6 mm-25 mm) using 00-RB Die Heads.
- 2 1/2"-6" (62 mm-150 mm) with 141/161 geared threaders.

Catalog No.	Model No.	Description	Dies	Weight, kg
46832	700	115 V 25 - 60 Hz	BSPT	14
12651	700	230 V 25 - 60 Hz Double Insulated	BSPT	14
16251	700-C	115 V 25 - 60 Hz 1/2"- 2" BSPT	BSPT	37
16241	700-C	230 V 25 - 60 Hz 1/2"- 2" BSPT	BSPT	37



Model 300 Compact

Features

- Heavy-duty proven performance.
- Lightweight, portable design.
- Fast transport and set-up.
- Self-Contained Oil System with adjustable flow control.
- Versatility for threading and grooving.
- Quiet operation.
- Approved by CSA to CSA and UL standards (115V only).

Capacity

- Pipe: 1/8" - 2" (3 mm-50 mm).
- Bolt: 1/4" - 2" (6 mm-50 mm).



Catalog No.	Model No.	Description	Capacity in	Speed RPM	Die Head Self Opening 815A	Weight, kg
50697	300 Compact	230 V 25 - 60 Hz Universal	1/8 - 2	38	•	52,0
50692	300 Compact	115 V 25 - 60 Hz Universal	1/8 - 2	38	•	52,0
20391	300 Compact (DK)	230 V 25 - 60 Hz Universal	1/8 - 2	38	•	52,0



Model 1233 Threading Machine

Catalog No.	Model No.	Motor	Capacity in	Speed RPM	Die Head		Weight, kg
					Self Opening 815A	Self Opening 928A	
20215	1233	230 V, 50 - 60 Hz Universal	1/8 - 3	36	•	•	56
20220	1233	115 V, 50 - 60 Hz Universal	1/8 - 3	36	•	•	56
55212	1233	230 V, 50 - 60 Hz Universal	1/8 - 2	36	•	—	54

- 1/8" – 4" Capacity with 141 geared threader.
- One of the highest (56kg) and fastest 3" threading machines in the world.
- Supplied complete with 2" and 3" die head, dies, reamer, cutter and 5L RIDGID® oil.
- Available in both 110V and 230V



Model 418 Oiler

Catalog No.	Model No.	Description	Weight, kg
73442	418	Oiler with 5 Litres of Thread Cutting Oil	9,8
72342	402	Utility Oiler (Consists of Pump, Hose, and Attachments to screw onto 1-Gallon Oil Can (Oil Can and Oil not included))	1,3

Threading Oil

Catalog No.	Description	Weight, kg
11931	5 Litres	23,2
11531	25 Litres	23,5
18251	240 Litres (48 x 5 n)	260,0
16681	480 Litres (96 x 5 n)	557,0
15681	600 ml, Spray	4,2
11091	5 Litres Synthetic	23,2
19611	500 ml. Synthetic Spray	6,4

LOCATORS

21893

SeekTech® SR-20 Locator

- Target line and guidance arrows quickly identify distortion.
- Proximity signal and signal strength help work through difficult locates.

Active Line Trace Frequencies*.....128 Hz, 1 kHz, 8 kHz, 33 kHz.
Passive Power Trace.....50 Hz, 60 Hz, <4 kHz Broadband.
Passive Radio Trace.....4 kHz-15 kHz, 15 kHz-36 kHz.
Sonde Frequencies.....16 Hz, 512 Hz, 640 Hz, 850 Hz,
8 kHz, 16 kHz, 33 kHz.
Power Source.....4 C-Cell Batteries.
Battery Life.....Approximately 16 Hours.
Weight.....3.5 lbs. (1,6 kg).



21948

SeekTech® ST-305 Line Transmitter

- Lightweight and compact transmitter that delivers up to 5 Watts of power.



21953

SeekTech® ST-510 Line Transmitter

- Ten Watts of fully variable power output.
- LCD display provides instant visual feedback on line resistance and current flow.



30123

SeekTech® SR-60 Locator

- Can trace any frequency from 10 Hz to 490,000 Hz.
- Can trace energized lines and sondes (active beacons) simultaneously.
- Has all the ease of use and accuracy of the SR-20 locator but with ALL locatable frequencies.

Active Line Trace Frequencies**....128 Hz, 1 kHz, 8 kHz, 33 kHz, 51 kHz, 93 kHz, 200 kHz, 262 kHz.

Passive Power Trace..... 50 Hz, 60 Hz, <4 kHz Broadband.

Passive Radio Trace..... 4 kHz-15 kHz, 15 kHz-36 kHz.

Sonde Frequencies**16 Hz, 512 Hz, 640 Hz, 850 Hz, 8 kHz, 16 kHz, 33 kHz.

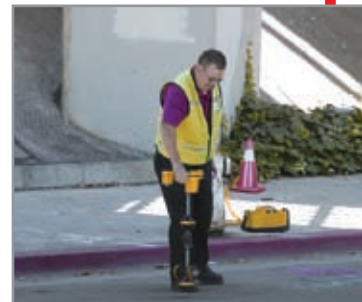
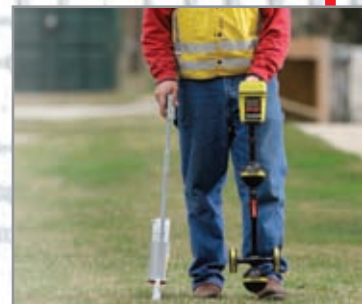
Power Source..... 4 C-Cell Batteries.

Battery Life..... Approximately 16 Hours.

Weight..... 5.1 lbs. (2,3 kg).



Screen in Omniseek mode: See multiple lines (Screenshot shows three different lines) ①, ②, ③.



26563

SeekTech® ST-330 Line Transmitter

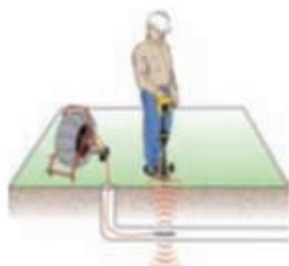
- The ideal transmitter for inducing current onto a target line.
- Increase efficiency and trace further by inducing over eight times more current than the competition onto a target line.



20973

SeekTech® Inductive Signal Clamp

- Allows users to apply a signal to a cable or pipe when direct connection is not possible.



Find sondes/beacons.



Direct connect to utility lines.



Find plastic pipe with integral line trace



Induce a signal to locate utilities.

TEST & MEASUREMENT

VIDEO INSPECTION

nanoReel

- Small diameter and tight turn radius camera allows lines up to 25m to be inspected with tight turns in 20mm lines. The camera passes 90° bends from 30mm onwards in most pipes (depends on the conditions and pipe construction, this cannot be guaranteed).
- Lightweight and compact unit allows for easy transport and efficient storage.
- Connects to the micro CA-300 or any SeeSnake® monitor.
- Interchangeable drums let you change out the inner drum depending on the application.



Ordering Information (reel only)

40003	nanoReel® for micro CA-300
40013	nanoReel® for SeeSnake®

36153

micro IR-100 Non-Contact Infrared Thermometer

- Simple, quick, and accurate surface temperature readings at the push of a button.
- You simply squeeze the trigger and point the ultra-sharp dual lasers at the surface being measured.
- Temperature measurements are instantly provided on a clear, easy-to-read backlit LCD display.



40613

micro CA-300

- Equipped with a 90cm semi-flexible cable.
- Capture and archive images and videos.
- Download images and videos to a computer via the mini USB port and email them.



CLEANING STORAGE

37413

KJ-3100 with hose

- For pipes up to 250mm
- Powerful 16 HP Recoil start gasoline engine; 4 stroke
- Corrosion resistant forged brass pump head
- Heavy duty steel reel with 61 m of 3/8" hose



JOBMASTER® Cabinets



MODEL 1000

JOBMASTER® Cabinets also feature:

- Recessed handles for positive gripping even with a gloved hand
- Baked-on enamel finish for weather-resistance and durability
- Caster-ready 2.66 mm steel skids to accommodate optional casters for greater mobility
- Heavy-duty 1.52 mm steel construction with fully arc-welded seams
- Optional door shelves allow for greater organisation



Catalog No.	Model No.	Dimensions mm			Capacity m³	Weight kg
		Length	Depth	Height		
28161	100	1524	762	1743	1.72	213
28181	111	1524	610	1540	1.34	175
28191	112	1524	762	1540	1.55	209
28221	139	1524	762	1540	1.68	202



MODEL 91

STORAGEMASTER® Chests



MODEL 42

JOBMASTER® Chests

Catalog No.	Model No.	Dimensions mm				Capacity m³	Weight kg
		Length	Depth	Height 1	Height 2		
28111	69	1524	762	956	1692	1.00	128
28121	79	1219	762	1260	1997	1.08	130
28131	89	1524	762	1260	1997	1.35	153
28151	91	1829	762	1260	1997	1.63	186

Catalog No.	Model No.	Dimensions mm				Capacity m³	Weight kg
		Length	Depth	Height 1	Height 2		
28011	36	915	485	498	965	0.20	44
28021	42	1070	485	549	1016	0.25	52
28031	4824	1220	610	676	1267	0.45	72
28041	4830	1220	765	829	1572	0.71	88
28051	2472	1830	610	676	1267	0.69	98
28061	60	1525	610	676	1267	0.57	86



RIDGID® operates a policy of continuous improvement and development and reserves the right to change design and specification of our products without notification or alteration of literature.

FY12.888BM_UK

RIDGID

Ridge Tool UK
c/o Emerson Electric UK Ltd
2nd Floor Accurist House
44 Baker Street
London
W1U 7AL

T: +44 (0) 808 238 9869 UK
F: +44 (0) 808 238 9904 UK
T: +353 1 800 936 397 Ireland
F: +353 1 800 936 240 Ireland
ridgid.gb@emerson.com
www.RIDGID.eu



EMERSON
Commercial & Residential Solutions